

CORRECTION

Open Access



Correction: The cullin4A is up-regulated in chronic obstructive pulmonary disease patient and contributes to epithelial-mesenchymal transition in small airway epithelium

Yidan Ren^{1,3,4†}, Yi Zhang^{2†}, Lixia Fan¹, Qinlian Jiao^{3,4}, Yunshan Wang^{3*} and Qin Wang^{1*} 

Correction: *Respiratory Research* (2019) 20:84
<https://doi.org/10.1186/s12931-019-1048-4>

Following the publication of this article [1], a reader drew to our attention an anomaly associated with the data shown in some figures. After careful scrutiny, we found

that we somehow misused some images (Fig. 4A, E, F; Fig. 5A–C and Fig. 7D) in this article when constructing the final figure. This does not affect the interpretation of the experiments and the conclusions of the study. A corrected version of figure is presented here. We thank the reader of our article who drew this matter to our attention.

[†]Yidan Ren and Yi Zhang contributed equally to this work.

The original article can be found online at <https://doi.org/10.1186/s12931-019-1048-4>.

*Correspondence:

Yunshan Wang
wangyunshan135@126.com

Qin Wang
wangqin8207@163.com

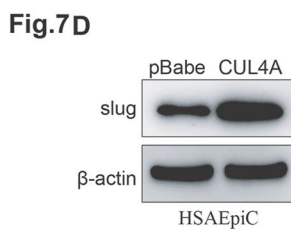
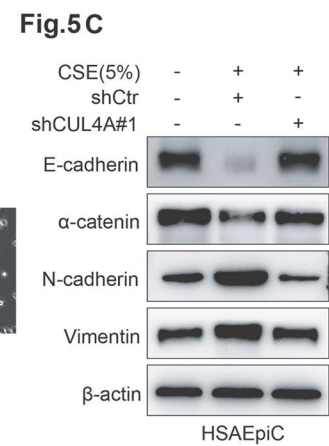
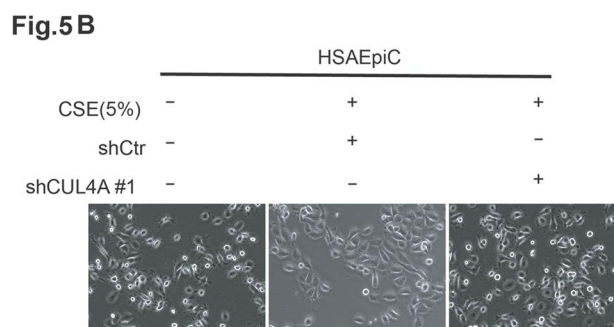
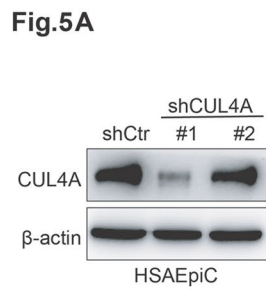
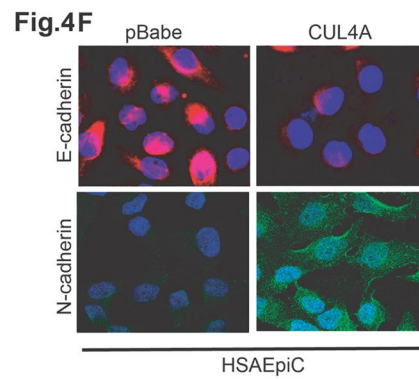
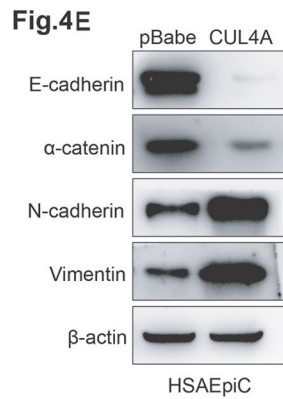
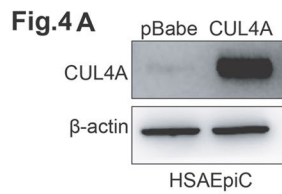
¹ Department of Anesthesiology, Qilu Hospital, Shandong University, Jinan, China

² Department of Respiratory Medicine, Qilu Hospital, Shandong University, Jinan, China

³ Department of Clinical Laboratory, The Second Hospital of Shandong University, Jinan, China

⁴ International Biotechnology R&D Center, Shandong University School of Ocean, Weihai, China





Published online: 14 July 2023

Reference

- Ren Y, Zhang Y, Fan L, Jiao Q, Wang Y, Wang Q. The cullin4A is up-regulated in chronic obstructive pulmonary disease patient and contributes to epithelial-mesenchymal transition in small airway epithelium. *Respir Res.* 2019;20:84. <https://doi.org/10.1186/s12931-019-1048-4>.

Publisher's Note

Springer Nature remains neutral with regard to jurisdictional claims in published maps and institutional affiliations.