

CORRECTION

Open Access



Correction to: Cigarette smoke exposed airway epithelial cells-derived EVs promote pro-inflammatory macrophage activation in alpha-1 antitrypsin deficiency

Nazli Khodayari^{1*}, Regina Oshins², Borna Mehrad², Jorge E Lascano², Xiao Qiang³, Jesse R West², L Shannon Holliday⁴, Jungnam Lee², Gayle Wiesemann⁴, Soroush Eydgahi² and Mark Brantly²

Correction to: Khodayari et al. *Respiratory Research* (2022) Sep 6;23(1):232

<https://doi.org/10.1186/s12931-022-02161-z>

After the publication of this original article [1], the authors identified an error in Fig. 3B. The images of GAPDH control was mistakenly placed within the control group into the CS group. The authors confirm that these corrections do not change the result interpretation or conclusions of the article and apologise for this error

The correct version of figure is given below.

The online version of the original article can be found at <https://doi.org/10.1186/s12931-022-02161-z>

*Correspondence:

Nazli Khodayari

Nazli.khodayari@medicine.ufl.edu

¹Division of Pulmonary, Critical Care, and Sleep Medicine, College of Medicine, University of Florida, 1600 SW Archer Rd Rm M453A, Gainesville, FL 32610, USA

²MilliporeSigma, Burlington, MO, USA

³Department of Orthodontics, College of Dentistry, University of Florida, Gainesville, FL, USA

⁴College of Medicine, University of Florida, 1600 SW Archer Rd Rm M453A, 32610 Gainesville, FL, USA



© The Author(s) 2023. **Open Access** This article is licensed under a Creative Commons Attribution 4.0 International License, which permits use, sharing, adaptation, distribution and reproduction in any medium or format, as long as you give appropriate credit to the original author(s) and the source, provide a link to the Creative Commons licence, and indicate if changes were made. The images or other third party material in this article are included in the article's Creative Commons licence, unless indicated otherwise in a credit line to the material. If material is not included in the article's Creative Commons licence and your intended use is not permitted by statutory regulation or exceeds the permitted use, you will need to obtain permission directly from the copyright holder. To view a copy of this licence, visit <http://creativecommons.org/licenses/by/4.0/>. The Creative Commons Public Domain Dedication waiver (<http://creativecommons.org/publicdomain/zero/1.0/>) applies to the data made available in this article, unless otherwise stated in a credit line to the data.

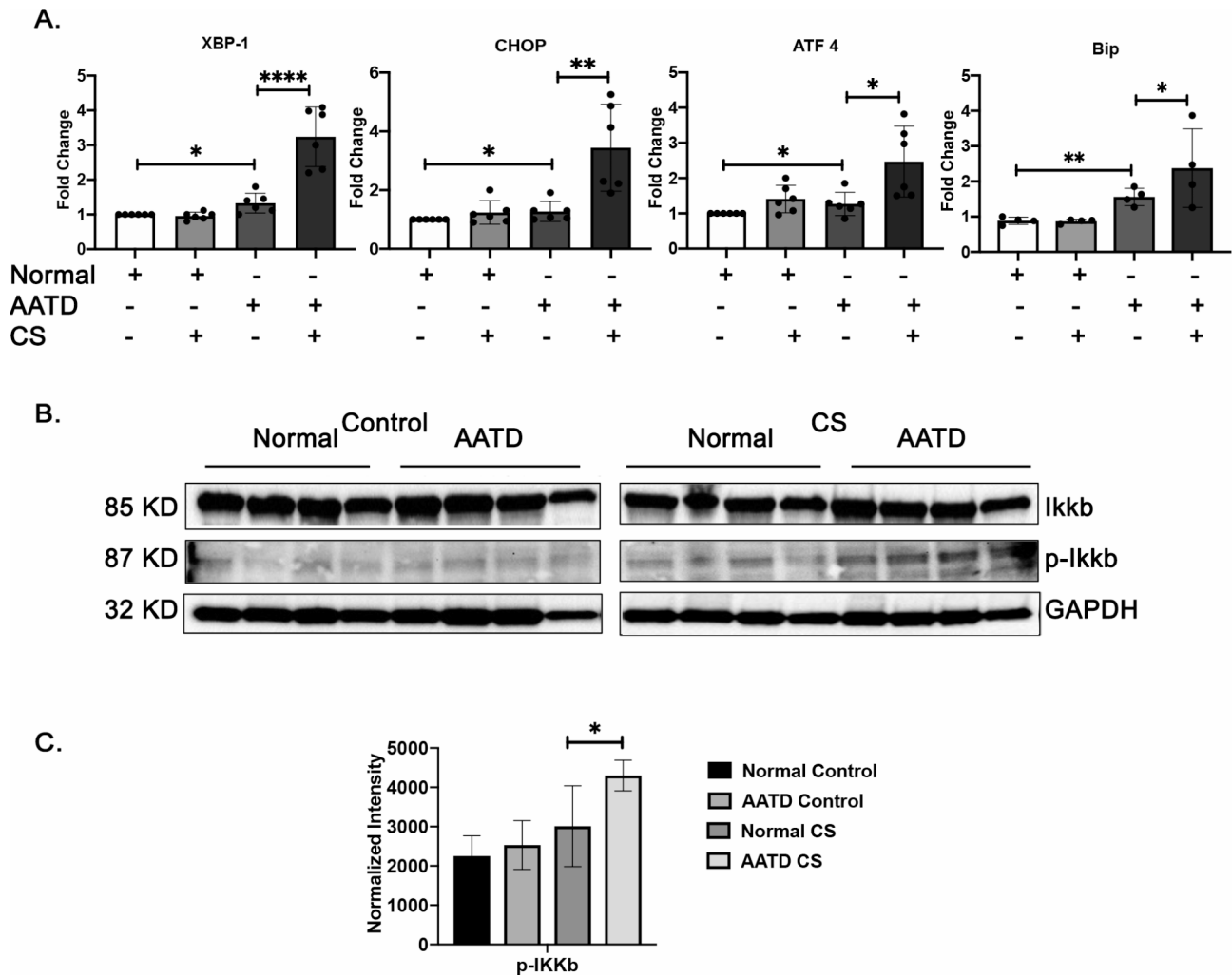


Fig. 3 Induction of ER stress and NF- κ B inflammatory pathway in AATD macrophages in response to cigarette smoke. **A** Comparison of the mRNA expression levels of XBP-1, CHOP, ATF 4, and BiP in normal and AATD macrophages exposed to air or cigarette. **B** Western blot analysis of 4 different normal and AATD macrophages incubated with control or CS exposed showing activation of NF- κ B pathway in AATD macrophages after CS exposure. **C** Bar graphs showing the results of quantification and normalization of band intensities, * $p < 0.05$, ** $p < 0.005$, **** $p < 0.00005$

Published online: 04 November 2023

Publisher's Note

Springer Nature remains neutral with regard to jurisdictional claims in published maps and institutional affiliations.